

Shoup 42655 LED Conversion Kit



Shoup Manufacturing Co.

3 Stuart Drive

Kankakee IL 60901

800-627-6137

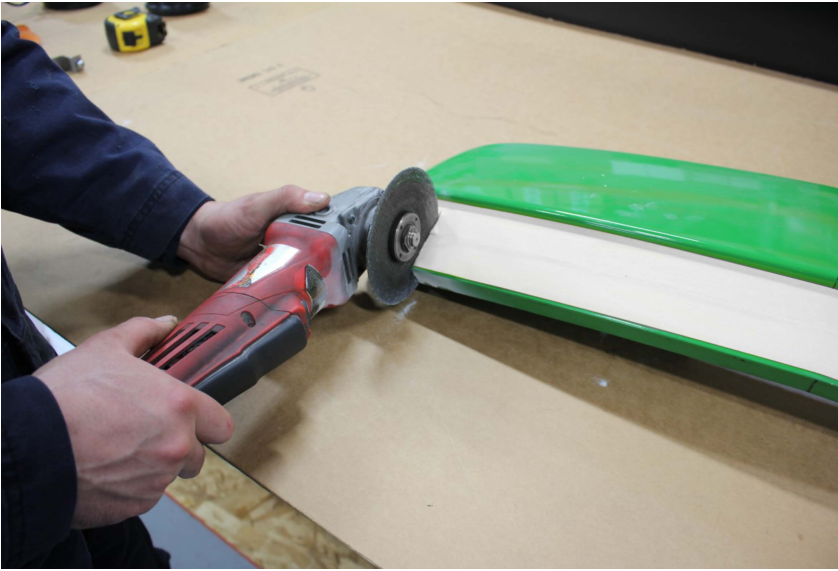
www.shoupparts.com



Step 1– Remove front nose from hood, may have to cut decals. Find Centerline of front nose in Fig. 1. After finding centerline, measure 13 inches both ways of centerline. Before you cut, give yourself about 1/8" of clearance. You will want to file to fit. 13-1/8" is **MAXIMUM** from centerline.

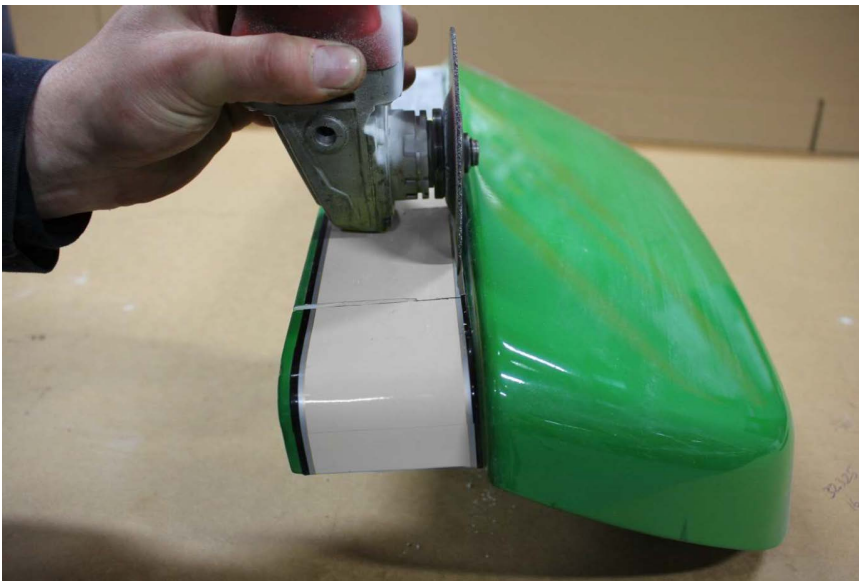


We used a right angle grinder with a 1/8" cutting blade to cut our marks. We didn't cut all the way to reduce splintering. Sawzall or Jigsaws splinter fiberglass easily, so a cutoff wheel is preferred.





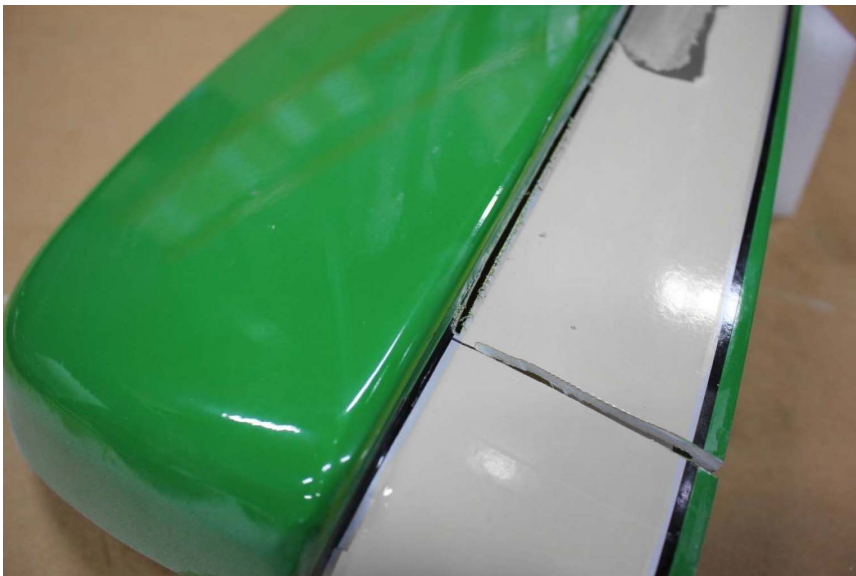
Next we measure from bottom of nose to where we will cut. The measurement should be 2"



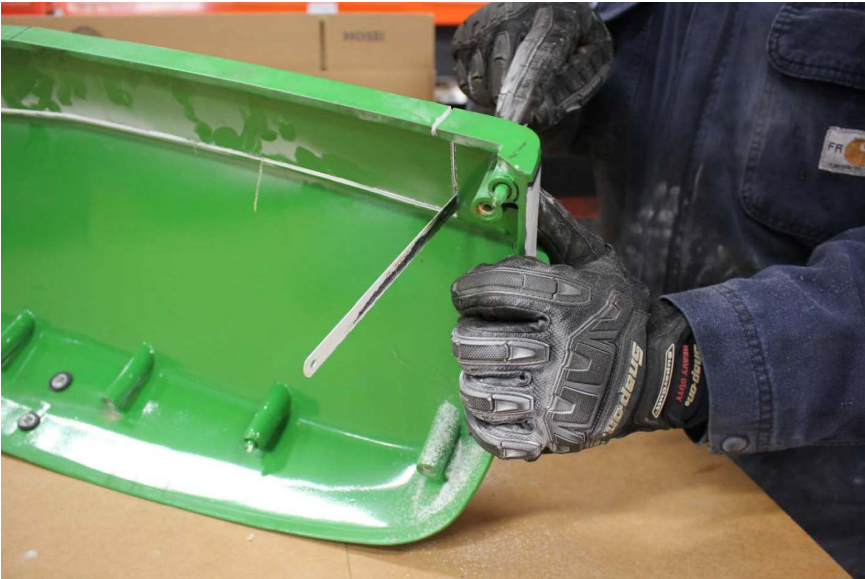
Next cut on the bottom side of marked line. You will want to file to fit as well.



Extra picture for reference



Extra picture for reference



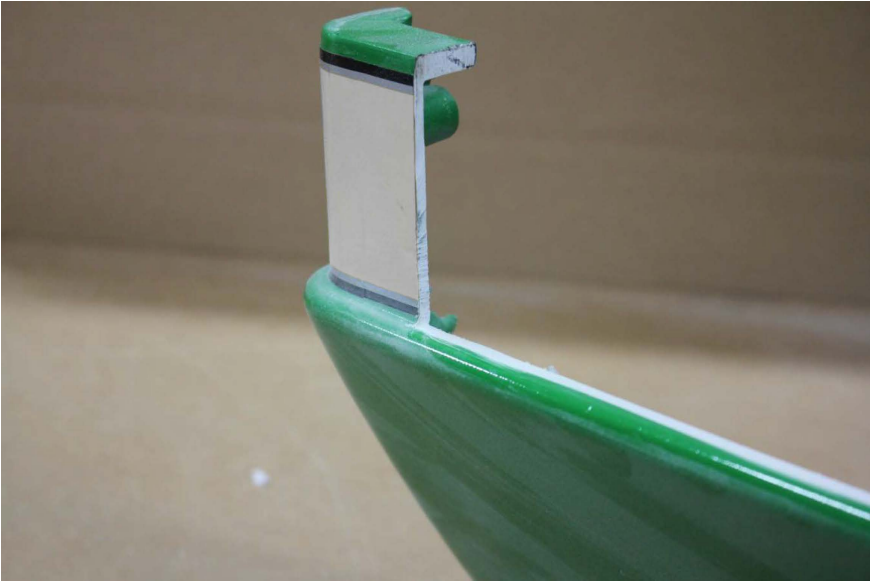
Next cut the remaining corners with hacksaw blade.





Next file the rough edges away and check fitment of new light housing.





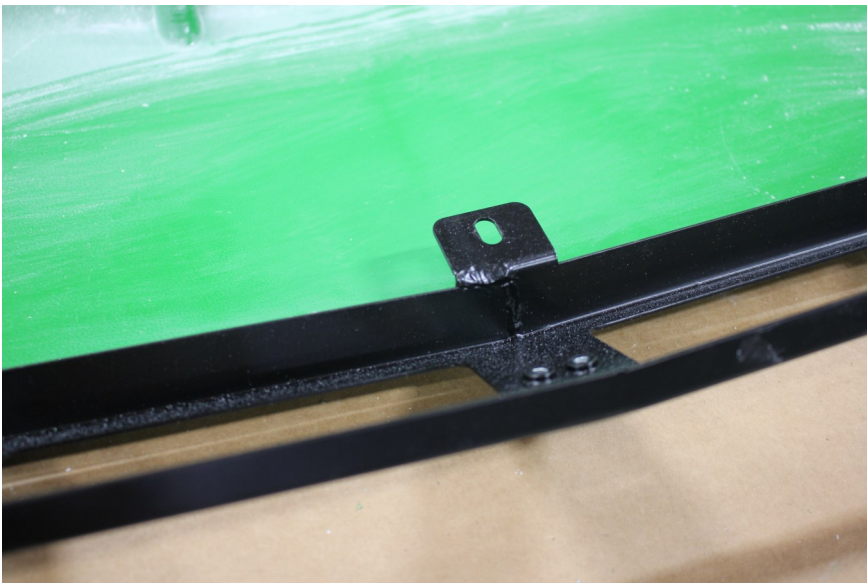




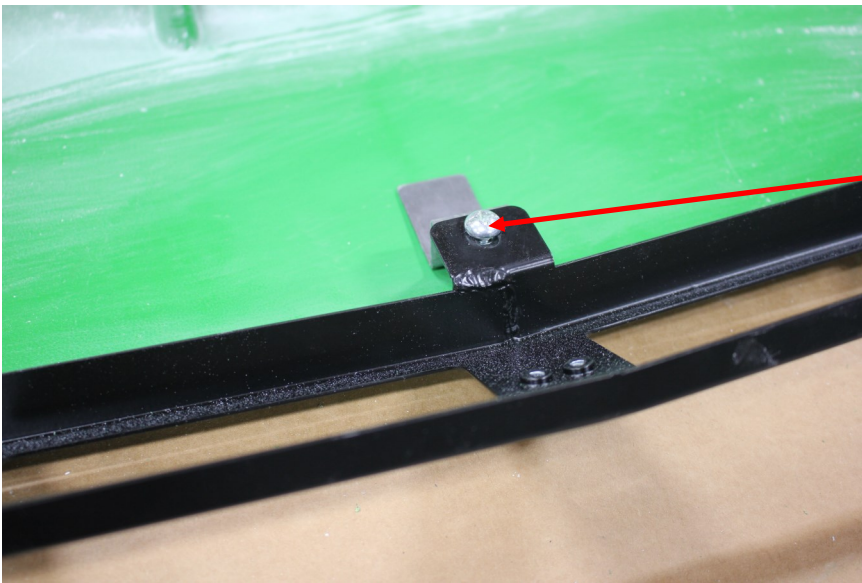
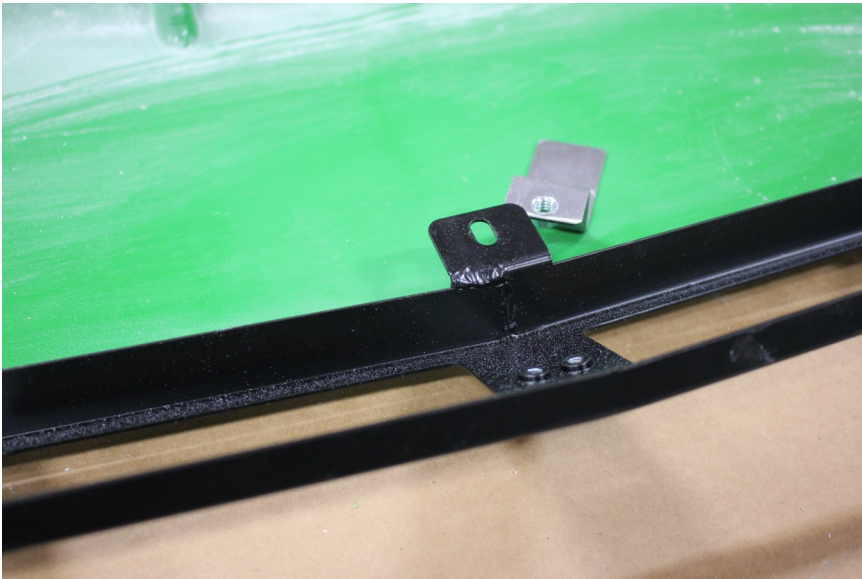
Checking fitment of new light housing, this may take several times to get correct alignment.



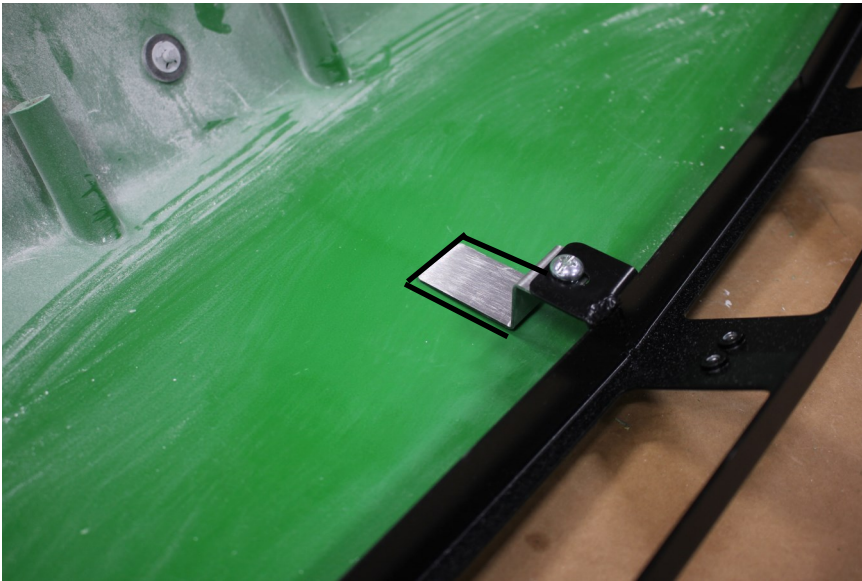
Check to make sure new light housing bolt slot aligns with nose. Tabs may have to be bent slightly to get correct alignment



Install tab to be composite glued to nose.



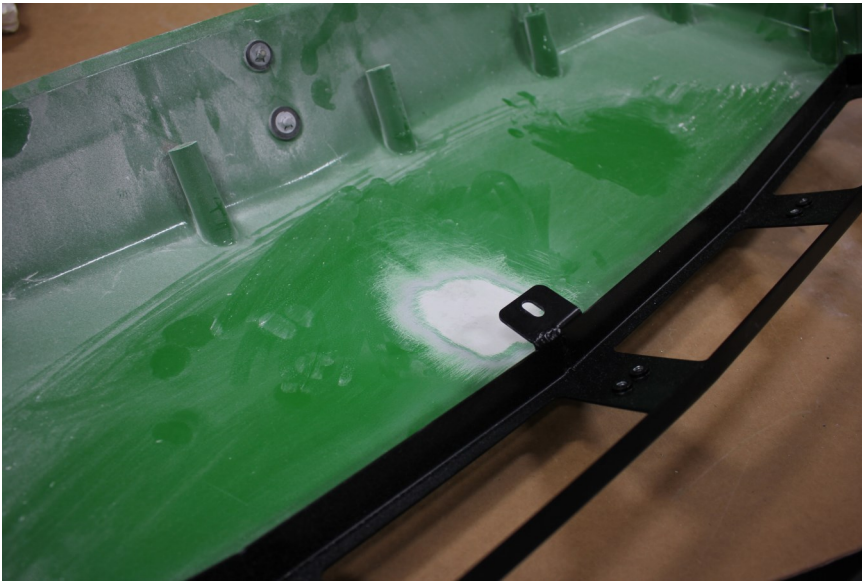
Center bolt in slot of light housing.



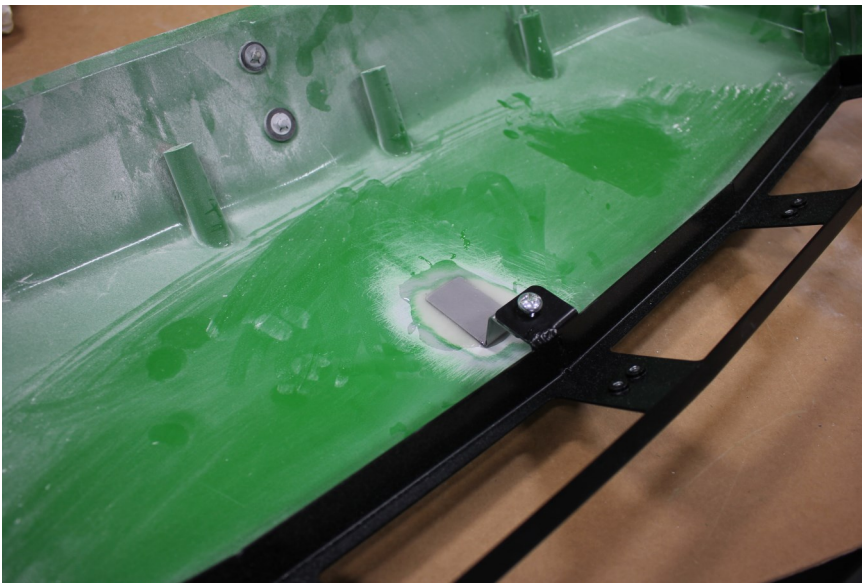
Mark outside edge of tab with a marker.



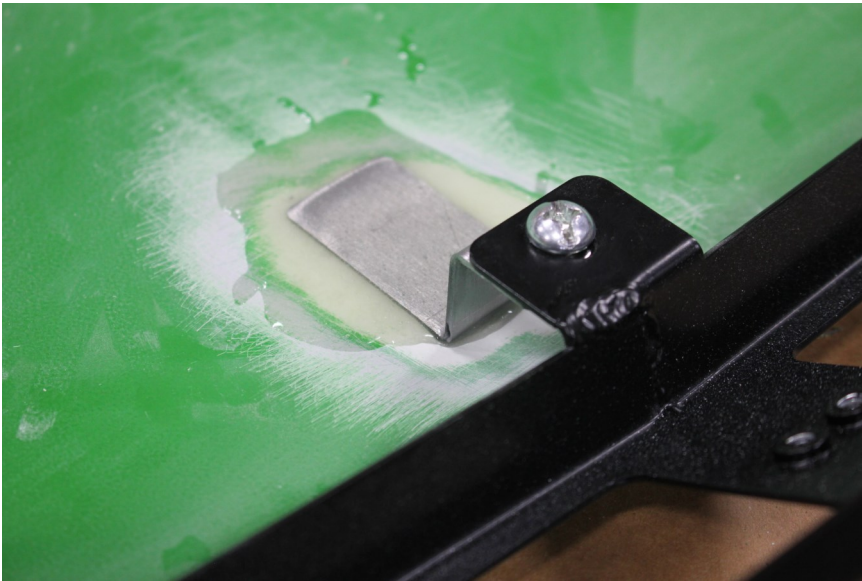
Composite glue to be used with support tab



Rough Sand or buff with scotch bright pad until white area appears. Composite needs to bond with fiberglass, not paint. Clean surface of all dust.



Mix composite and spread thin layer between tab and nose. Install tab and place remaining composite on top of tab. You will need plenty to cover tab and about 1/2"-3/4" around tab. Let sit for 10-15 mins.



After 10-15 minutes remove 3 bolts to remove light housing. Paint if desired. After painting, reinstall nose to hood without light housing. Once nose is installed on hood reinstall light housing.



Install lights into light housing and secure with bezels and screws. Take care to install lights all the same way for wiring making sure the wiring tabs are all facing the same way. Wiring should be on the right side of tractor. Lights are polarity specific, RED to +, black to -



After installing lights, results should look like fig 29. Since these tractors come with no lights form the factory, there is no wiring harness connection. You will have to find a wire from the switch or a fender light to connect to.

Reinstall hood to tractor and bolt in place. Connect wiring and test lights.



Shoup Manufacturing Co.
3 Stuart Drive
Kankakee IL 60901
800-627-6137
www.shoupparts.com