

# Shoup 42651 LED Conversion Kit



Shoup Manufacturing Co.  
3 Stuart Drive  
Kankakee IL 60901  
800-627-6137  
[www.shoupparts.com](http://www.shoupparts.com)

# Shoup 42651 Kit Components



1- X1 LIGHT HOUSING

2- X3 RE306510 TIGHERLIGHTS LED LIGHTS

3- X1 BILLET LIGHT BEZEL

4- X1 JB WELD EPOXY

5- X1 METAL TAB

6- X4 STAINLESS STEEL SCREWS

7- X1 TLWH9 WIRE HARNESS

8- ELECTRICAL CONNECTOR AND PINS ( ATTACHED TO WIRE HARNESS)



Remove front nose from hood.



Remove oem light assembly by removing the 6 nuts.



After cleaning are where oem light was, mark cut marks as shown in figure 4.



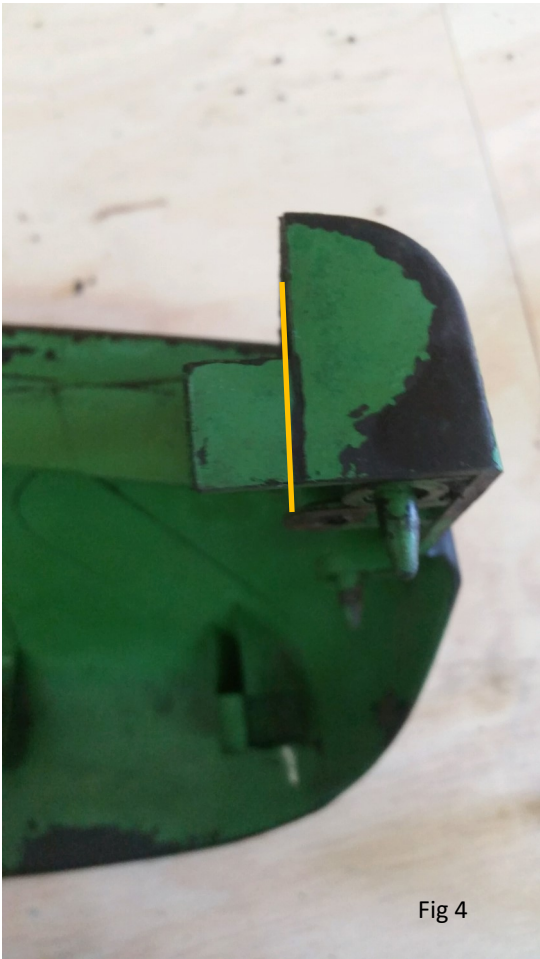


Fig 4



Fig 5.

Mark just under this hole to make cuts.  
(see yellow marks in picture) See figure  
6&7 before making cuts.

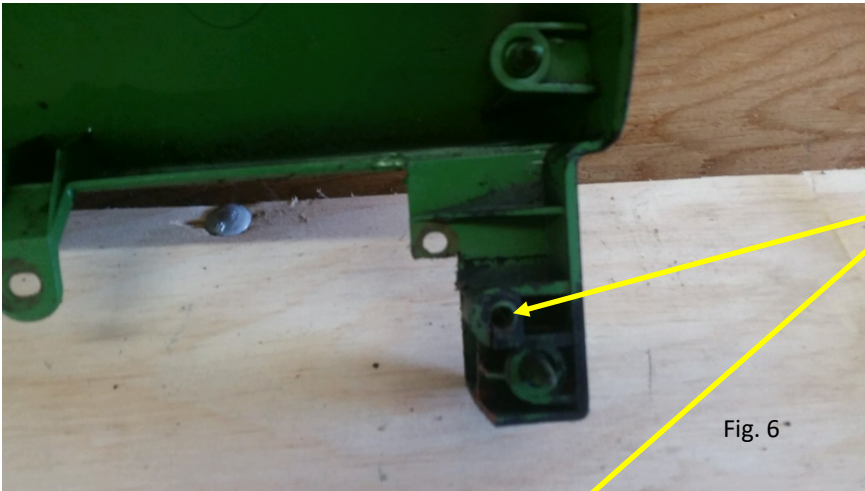


Fig. 6

Cut out plastic housing using your marks. Do not cut into this bolt thread.

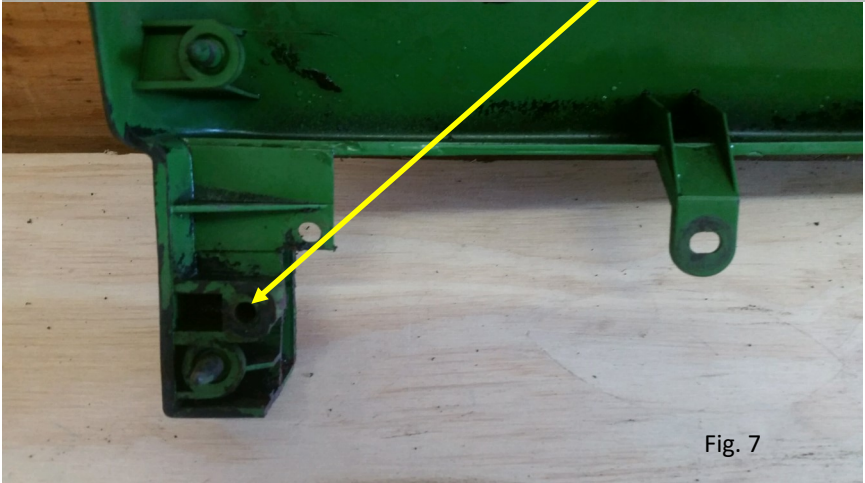


Fig. 7

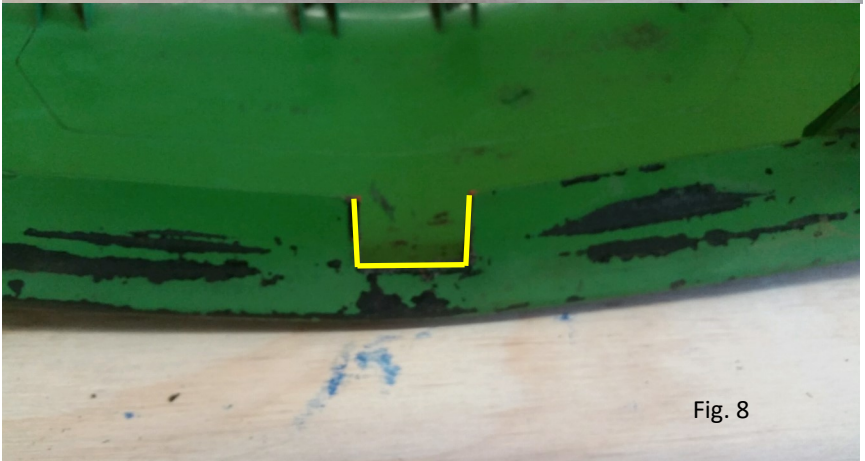


Fig. 8

Mark nose for cutting out for center tab. Cuts only have to be as wide as the tab.

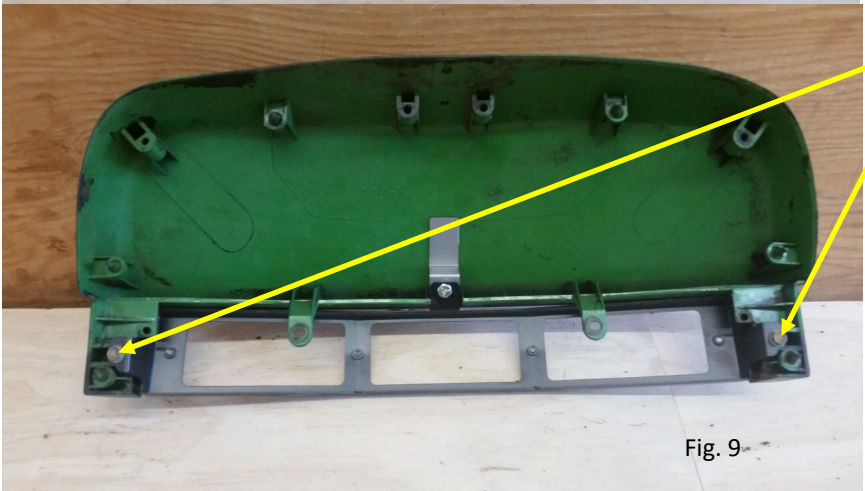


Fig. 9

Install Tigerlights conversion housing using 2 bolts.

Use supplied tab, attach to conversion housing with 1/4" bolt

Mark for where Epoxy has to be applied underneath tab. Remove tab and apply epoxy/reinstall tab. You have 5 mins to reinstall tab before epoxy dries. Let the tab/epoxy set for 20 mins to insure proper setting.

Fig. 10- Reinstall nose to hood, install light housing behind hood mounts. Tighten 3 bolts. Install the supplied lights and wiring harness. Red wire to +/positive, Black to -/negative on the backside of supplied lights.

Fig. 11- Install front bezel using 4 screws to hold lights in place. Tighten screws equally to snug fit on bezel.



Shoup Manufacturing Co.  
3 Stuart Drive  
Kankakee IL 60901  
800-627-6137  
[www.shoupparts.com](http://www.shoupparts.com)