



360 YIELD SAVER

INSTALLATION INSTRUCTIONS



360YIELDCENTER.COM

FOR QUESTIONS PLEASE CONTACT OUR
PRODUCT SUPPORT TEAM AT 309-300-3120

9.14.20 • V6

All trademarks are the property of 360 Yield Center, its affiliates and/or its licensors. ©2019 360 Yield Center. All rights reserved.

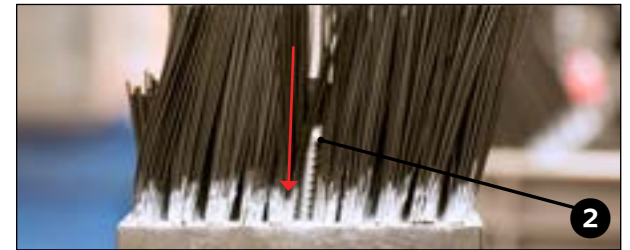
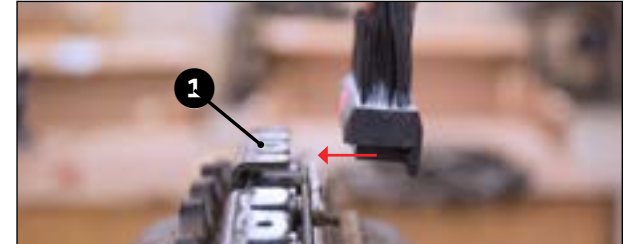
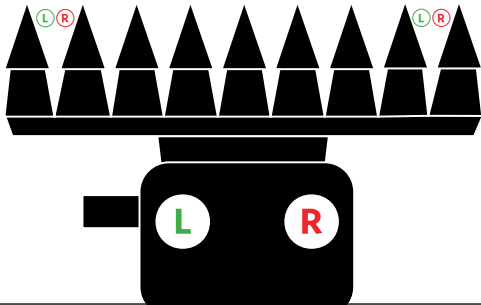


INSTALLATION INSTRUCTIONS



IMPORTANT

LEFT (L) AND RIGHT (R) ARE DEFINED FROM THE PERSPECTIVE OF THE OPERATOR'S SEAT.



HELPFUL TOOLS

- T25 Torx Head Bit and Bit Extension
- Cordless Drill
- 16mm, 18mm, and 24mm Combination Wrenches (CNH)
- 16mm, 18mm, and 24mm Sockets (CNH)
- 15/16" Combination Wrench and Socket (Deere)
- Ratchet Wrench or Impact Gun
- YIELD SAVER Installation Tool

NEED HELP?

Call our Product Support team at 888-512-4890.

STEP 1 | RIGHT VS. LEFT

Identify **Left (LH)** and **Right (RH)** gathering chains. **Left** gathering chains are color coded with a **green zip tie**. **Right** gathering chains are color coded with a **red zip tie**.

NOTE: Remove zip ties before installing brush blocks but remember to note right vs left chains.

Identify **LEFT** and **RIGHT** brush blocks. **LEFT** brush blocks are labeled "LEFT HAND UP". **RIGHT** brush blocks are labeled "RIGHT HAND UP".

BEFORE YOU ASSEMBLE...

All **left** ("LEFT HAND UP") blocks, including "L" crop lugs, will only be installed on a **left** gathering chain.

All **right** ("RIGHT HAND UP") blocks, including "R" crop lugs, will only be installed on a **right** gathering chain.

STEP 2 | BLOCK INSTALLATION

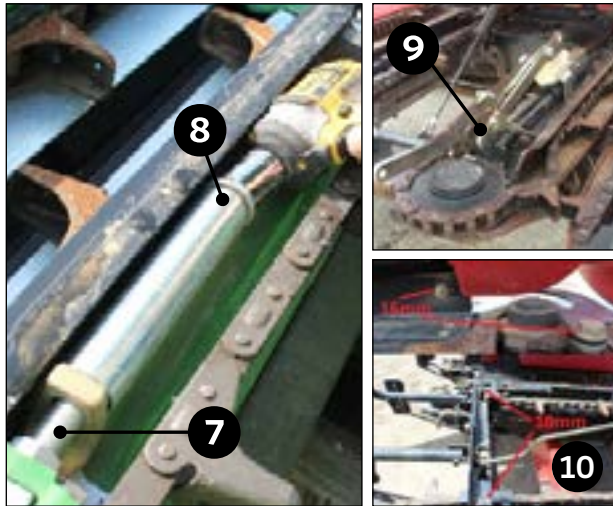
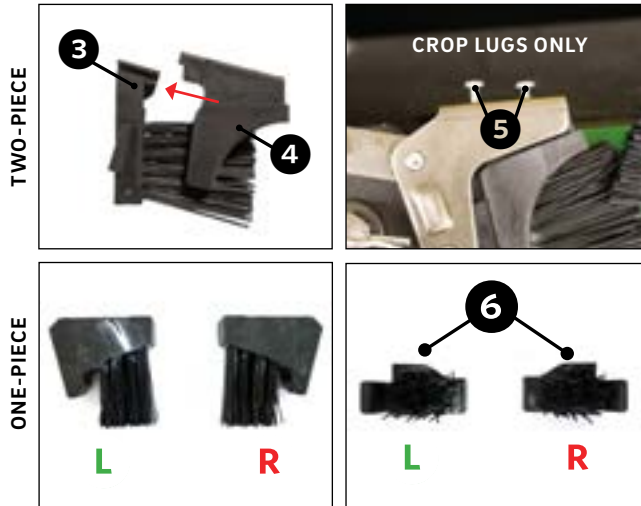
Firmly press brush blocks onto a brush block tab **1** on gathering chain. **Ensure blocks are seated evenly on chain tabs and holes align.**

Using a T25 torx bit and bit extension, insert a screw into the block, with screw head on bristle side of block **2**, until the screw is seated firmly against the brush block (close to 25 in/lbs).

CAUTION: Cordless Drill or Screwdriver only. Do not use impact!

Repeat for all brush blocks on each gathering chain.

INSTALLATION INSTRUCTIONS



STEP 3 | CROP LUG INSTALLATION

Depending on the model you could have either a one-piece or a two-piece crop lug. If you have the two piece crop lug, assemble the crop lug brush blocks by sliding bristle block **3** into crop lug tab **4**.

Attach each crop lug to gathering chain with two screws **5** using T25 torx bit with close to 15 in/lbs.

NOTE: When installing the one-piece crop lug, the tab and two shorter bristles **6 should be oriented towards the top side of the chain.**

Repeat for all crop lugs on each gathering chain.

STEP 4 | REMOVE OEM CHAINS

Loosen lock nut on chain tensioner **7** and loosen chain tensioner bolt **8** until the gathering chain can be removed.

NOTES

Geringhoff, Case 4000 Series, and New Holland 980 Series headers will have a special de-tensioning tool **9** that will allow for quick replacement of gathering chains.

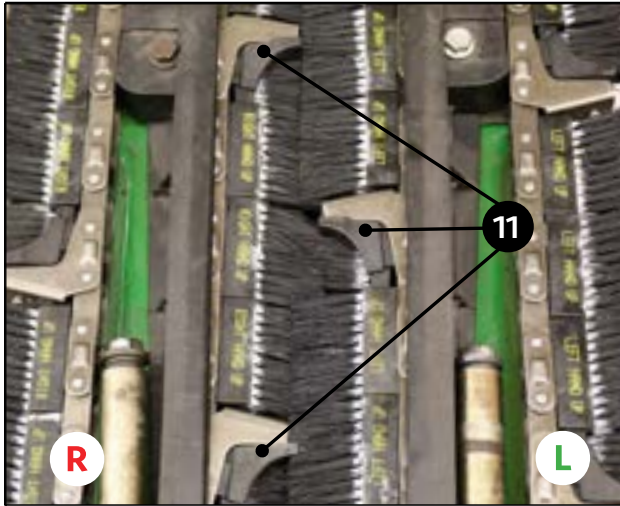
Case IH 2000-3000 Series and New Holland 996, 98C, and 98D headers will have extra components **10** that will need to be removed to allow for the gathering chains to be replaced.

STEP 5 | INSPECTION

Inspect gathering chain sprockets for wear. Replace worn sprockets.

Check that tensioner spring is functional and clear of debris.

INSTALLATION INSTRUCTIONS



BEFORE YOU INSTALL...

Remember, left and right are determined from the operator's seat.

Chains should be installed with the crop lugs staggered throughout the row unit with the crop lug tabs **11** to the top side of the chain.

Chains should be oriented with the long bristles of the blocks to the top side of the chain on both the **left** and **right** chains. **Blocks are also labeled to indicate which side of the block should be facing up.**



STEP 6 | INSTALL CHAINS

Install each 360 YIELD SAVER gathering chain by routing it over the sprockets until the chain is completely engaged.

A pry bar may need to be used if the chains are tight with the tensioner removed. Insert pry bar between idler sprocket teeth and pull against the chain **12**.

Tighten tensioner so that there is a 1/8" gap between the washer and the tensioner spring. Tighten the lock nut on the tensioner bolt. Headers that use a special detensioning tool will be automatically set to proper tension.



INSTALLATION COMPLETE

NOTES:

New 360 YIELD SAVER brushes will have a break-in period that could last a few hours.

After chains are installed and retightened spin head by hand to check for obstructions that could cause damage to crop lugs or brushes. Adjust or modify any interferences accordingly.