



# 360 DRAG CHAIN™

INSTALLATION INSTRUCTIONS



[360YIELDCENTER.COM](http://360YIELDCENTER.COM)

FOR QUESTIONS PLEASE CONTACT OUR  
PRODUCT SUPPORT TEAM AT 309-300-3120



10.21.19 • V13

# INSTALLATION INSTRUCTIONS

DRAG CHAIN ONLY - NO EXTENSION KIT



360 DRAG CHAIN



**A** CHAIN BRACKET

**B** CHAIN

**C** LEFT HAND BOLT AND NUT

**D** RIGHT HAND BOLT AND NUT

**E** LOCK WASHER

**F** BUSHING

**G** U-BOLTS

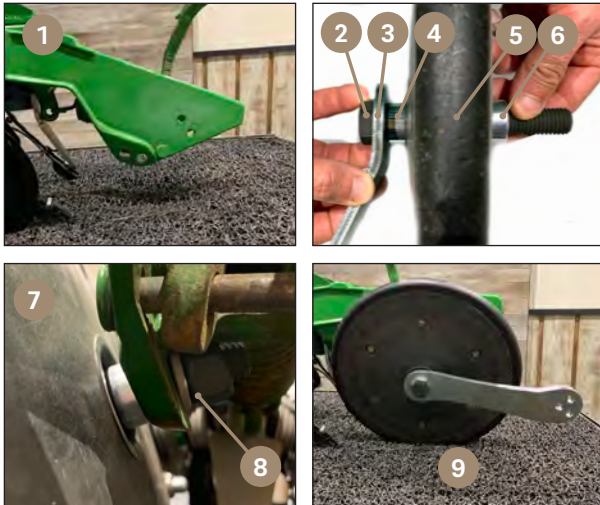
**H** NYLOCK NUTS

# INSTALLATION INSTRUCTIONS

## DRAG CHAIN ONLY - NO EXTENSION KIT



### STEP 1 INSTALL LEFT CHAIN BRACKET



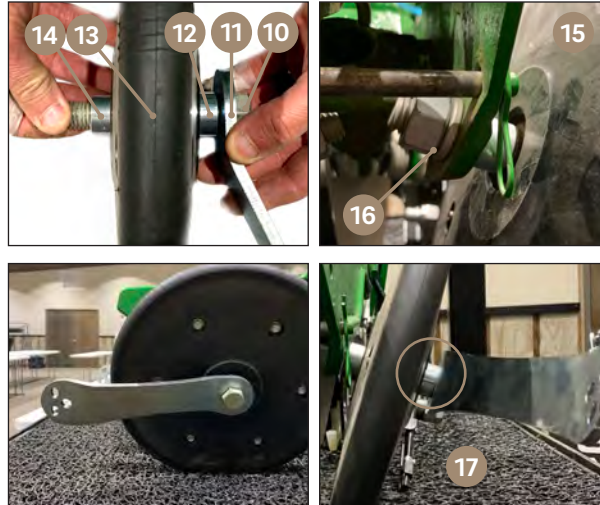
1 Using a 15/16" socket and wrench, remove closing wheels (if not already removed). Discard nuts & bolts but keep bushings.

Starting with the left side, insert long 15/16" bolt left hand bolt 2 through a chain bracket 3, bushing 4, left closing wheel 5, and previously set aside bushing 6.

7 Reinstall left closing wheel assembly on casting. Secure with lock washer and nut 8 and tighten using 15/16" socket and wrench.

**NOTE:** 9 As you tighten, ensure chain bracket remains parallel with the top of the closing system.

### STEP 2 INSTALL RIGHT CHAIN BRACKET

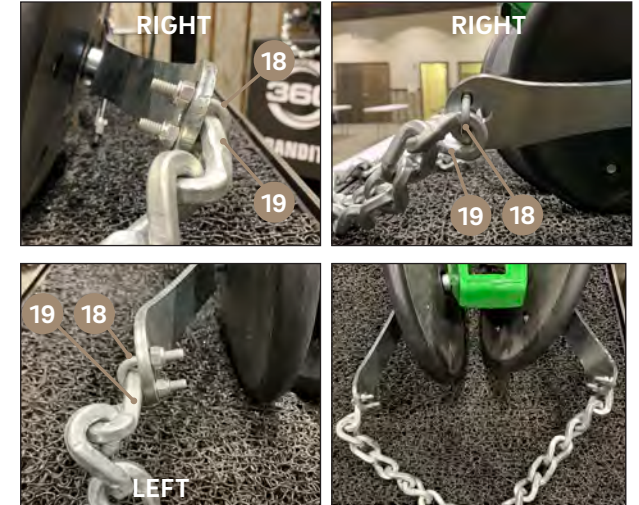


On the right side, insert long 15/16" right hand bolt 10 through a chain bracket 11, bushing 12, right closing wheel 13, and previously set aside bushing 14.

15 Reinstall right closing wheel assembly on casting. Secure with lock washer and nut 16 and tighten using 15/16" socket and wrench, ensuring the chain bracket remains parallel with the top of the closing system.

**NOTE:** 17 The closing wheels should not make contact with the chain brackets. If contact occurs, an extra bushing should be installed to create adequate spacing between the closing wheel and the chain bracket.

### STEP 3 INSTALL CHAIN



Using one u-bolt 18 on each side, attach drag chain 19 to chain bracket. Tighten u-bolts on chain and repeat for the other side.

## INSTALLATION COMPLETE

# INSTALLATION INSTRUCTIONS

## DRAG CHAIN + EXTENSION KIT



### STANDARD DRAG CHAIN KIT



**A** CHAIN BRACKET

**B** CHAIN

**C** LEFT HAND BOLT AND NUT

**D** RIGHT HAND BOLT AND NUT

**E** LOCK WASHER

**F** BUSHING

**G** U-BOLTS

**H** NYLOCK NUTS

### EXTENSION KIT



**I** EXTENSION ARM

**J** ROUND PLATE

**K** BUSHING

**L** BOLT

**M** NUT

**N** U-BOLTS

**O** NYLOCK NUTS



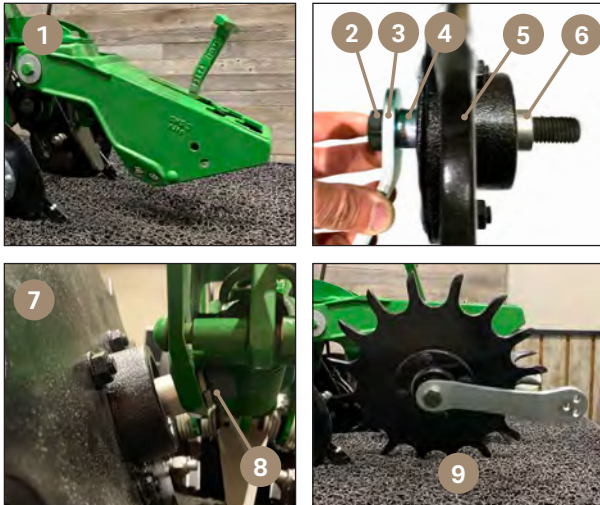
# INSTALLATION INSTRUCTIONS

## DRAG CHAIN + EXTENSION KIT



### STEP 1

#### INSTALL LEFT CHAIN BRACKET



**NOTE:** The chain extension kit is only needed when spiked-style closing wheels are used.

① Using a 15/16" socket and wrench, remove closing wheels (if not already removed). Discard nuts & bolts but keep bushings.

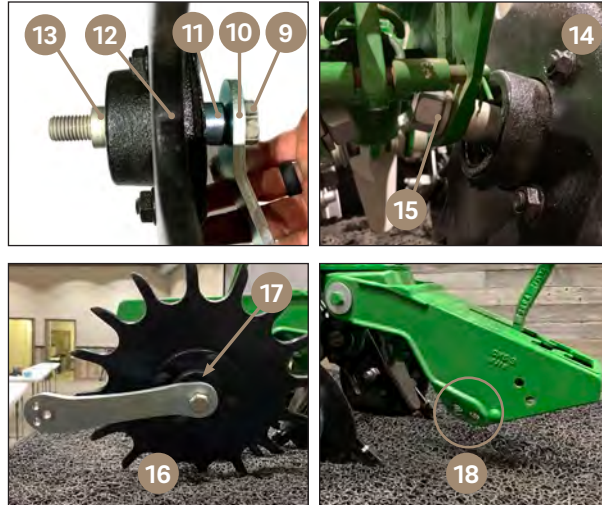
Starting with the left side, insert long 15/16" bolt left hand bolt ② through a chain bracket ③, bushing ④, left closing wheel ⑤, and previously set aside bushing ⑥.

⑦ Reinstall left closing wheel assembly on casting. Secure with lock washer and nut ⑧ and tighten using 15/16" socket and wrench.

**NOTE:** ⑨ As you tighten, ensure chain bracket remains parallel with the top of the closing system.

### STEP 2

#### INSTALL RIGHT CHAIN BRACKET



On the right side, insert long 15/16" bolt right hand bolt ⑨ through a chain bracket ⑩, bushing ⑪, right closing wheel ⑫, and previously set aside bushing ⑬.

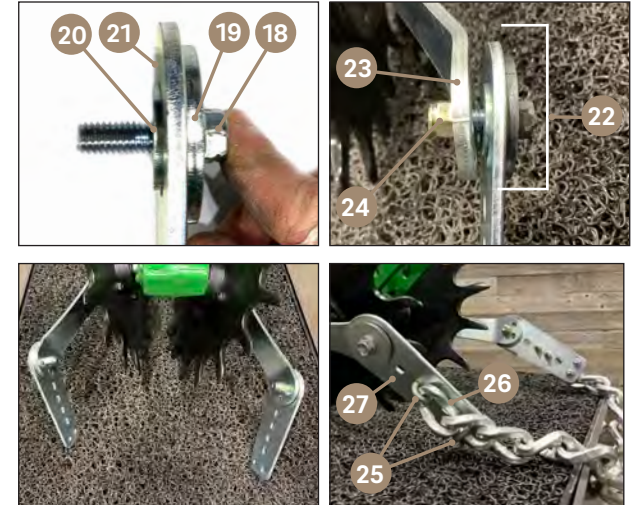
⑭ Reinstall right closing wheel assembly on casting. Secure with lock washer and nut ⑮ and tighten using 15/16" socket and wrench, ensuring the chain bracket remains parallel with the top of the closing system ⑯.

**NOTE:** ⑰ The closing wheels should not make contact with the chain bracket. If contact occurs, an extra bushing should be installed to create adequate spacing between the closing wheel and the chain bracket.

**NOTE:** ⑱ If the spiked wheels do not adequately clear the 360 BANDIT unit, put both closing wheels in the furthest back hole on the casting.

### STEP 3

#### INSTALL EXTENSION ARMS AND CHAIN



Insert 9/16" bolt ⑱ through the round plate ⑲, bushing ⑳, and then the extension arm ㉑. Repeat for second extension arm assembly.

Attach the extension arm assemblies ㉒ to the outside of both the left and right chain brackets ㉓. Secure with nut ㉔ and tighten with 9/16" socket or wrench.

**NOTE:** The extension bracket should be free moving when tightening is complete.

Using two u-bolts ㉕ on each side, attach drag chain ㉖ to chain extension bracket ㉗ using any of the provided holes. Tighten u-bolts on chain and repeat for the other side.

**Adjust chain length:** lift chain and check to make sure it can't get caught in closing wheels. If it does, loosen U-bolts and move them to the next link to shorten the chain. Recheck and adjust as needed.